

# Baying Free Standing Cubicles (Unidrive SP size 9, 6 pulse)

Figure 1-1 Preparation for baying the size 9 free standing drive (slave and master)

Remove panels as indicated

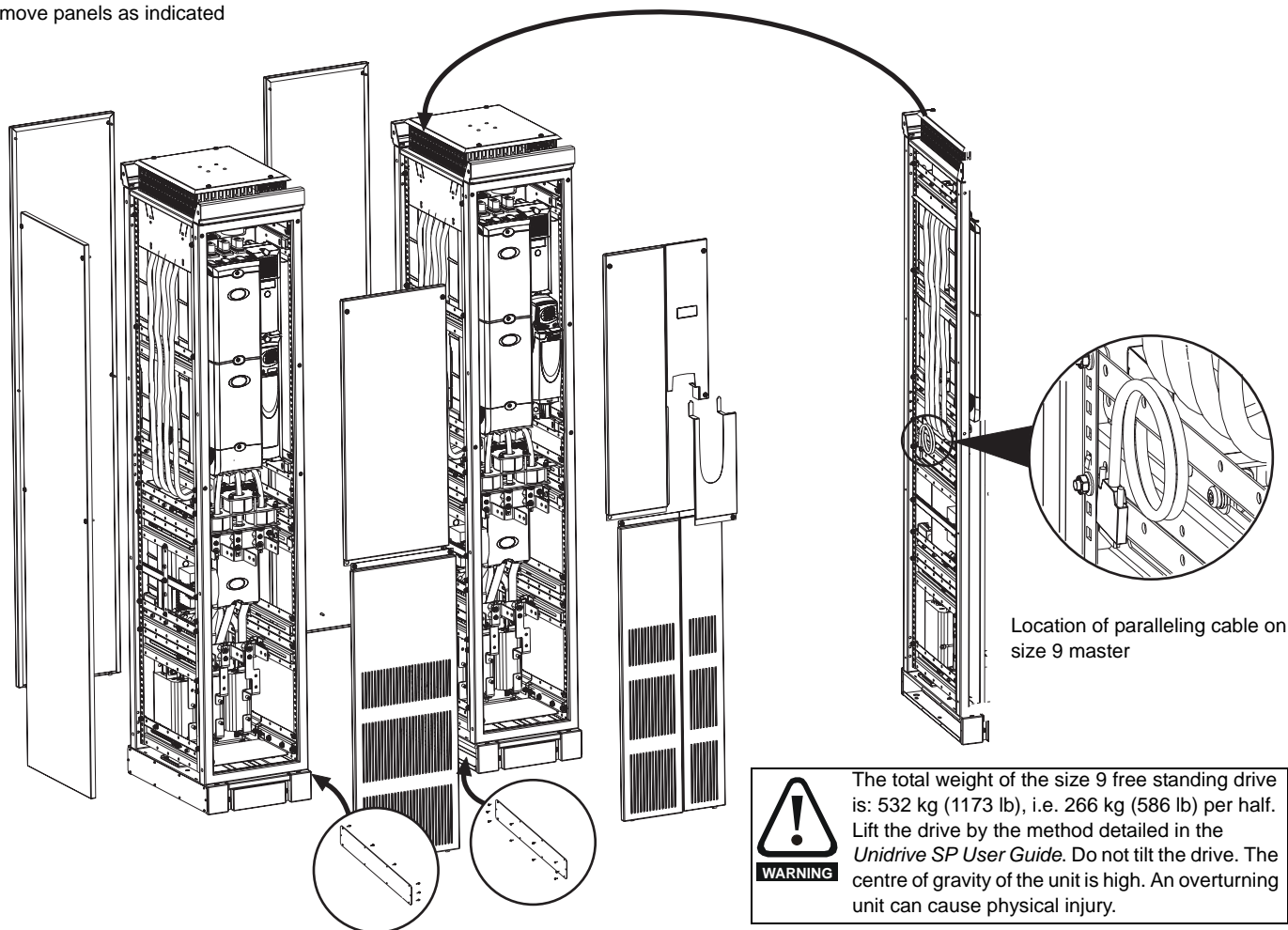
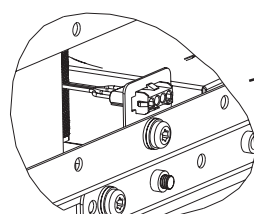
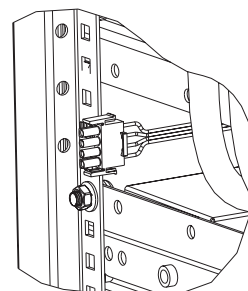
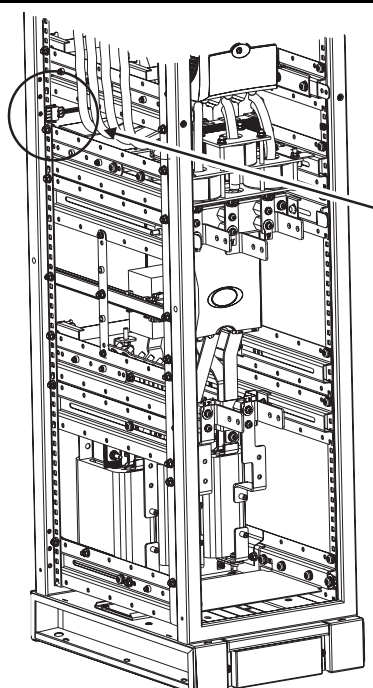
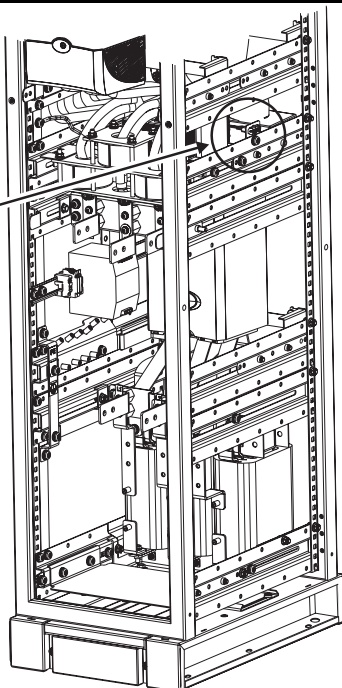


Figure 1-2 Location of the rectifier status connectors

Connect status connections together prior to joining cubicles

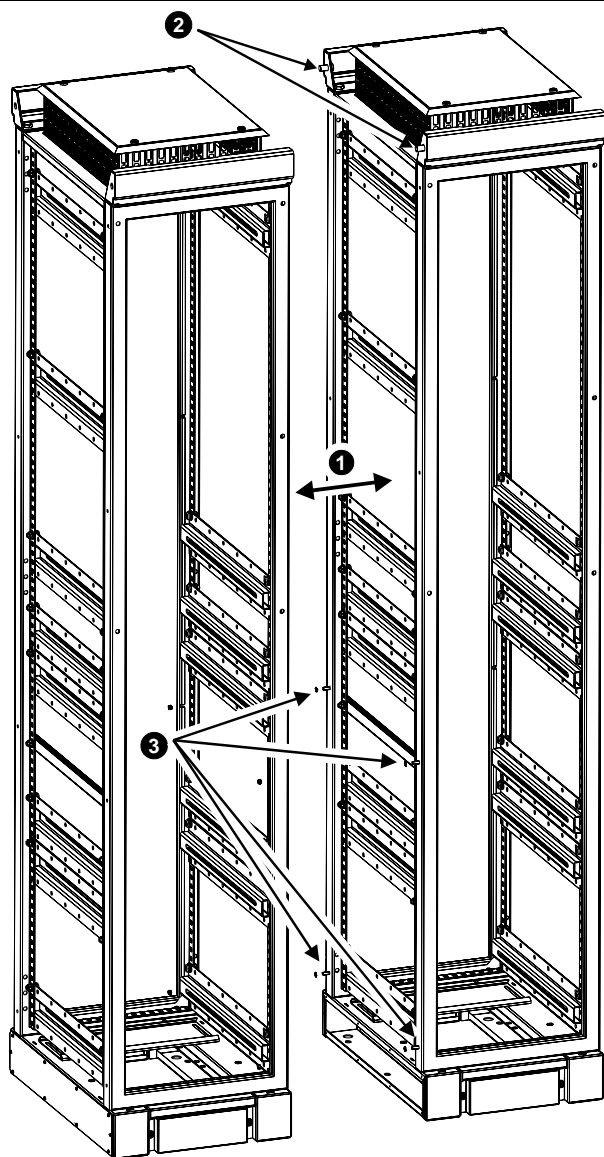


Location of rectifier status connector on slave cubicle



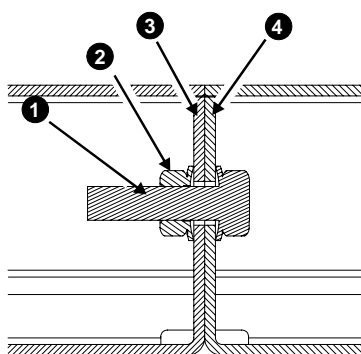
Location of rectifier status connector on master cubicle

Figure 1-3 Baying of cubicles



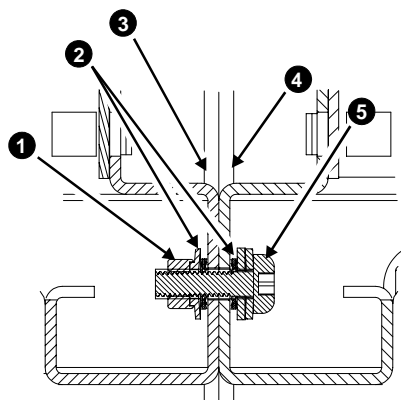
1. Push the two cubicles together
2. Fix in two places (front and back) with M10 nuts and bolts, through the lifting plates
3. Fix in four places (two at the front and two at the back) with M6 nuts, bolts and washers.

When baying a master cubicle and a slave cubicle, the master must be located on the right.



Lifting plates M10 fastening (2 places)

1. M10 flange headed set screw
2. M10 nut
3. Slave cubicle frame
4. Master cubicle frame



Frames M6 fastening (4 places)

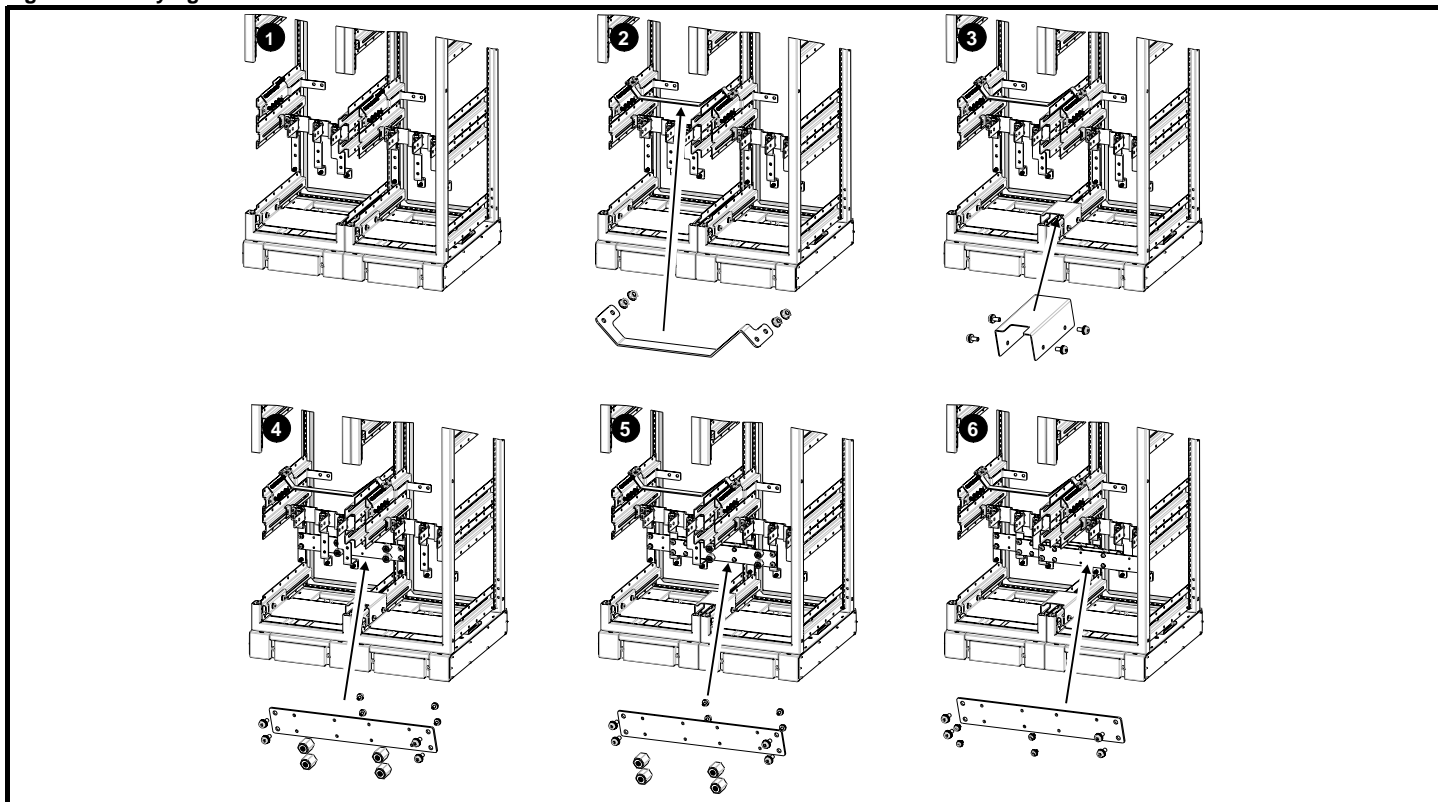
1. M6 nut
2. M6 star lock washer
3. Slave cubicle frame:
4. Master cubicle frame
5. M6 screw



**SCIGATE AUTOMATION (S) PTE LTD**

No.1 Bukit Batok Street 22 #01-01 Singapore 659592  
 Tel: (65) 6561 0488 Fax: (65) 6562 0588  
 Email: sales@scigate.com.sg Web: www.scigate.com.sg  
 Business Hours: Monday - Friday 8.30am - 6.15pm

**Figure 1-4 Baying the size 9 master and slave**



1. Master and slave cubicles bayed together

From the size 9 baying kit (6771-0025):

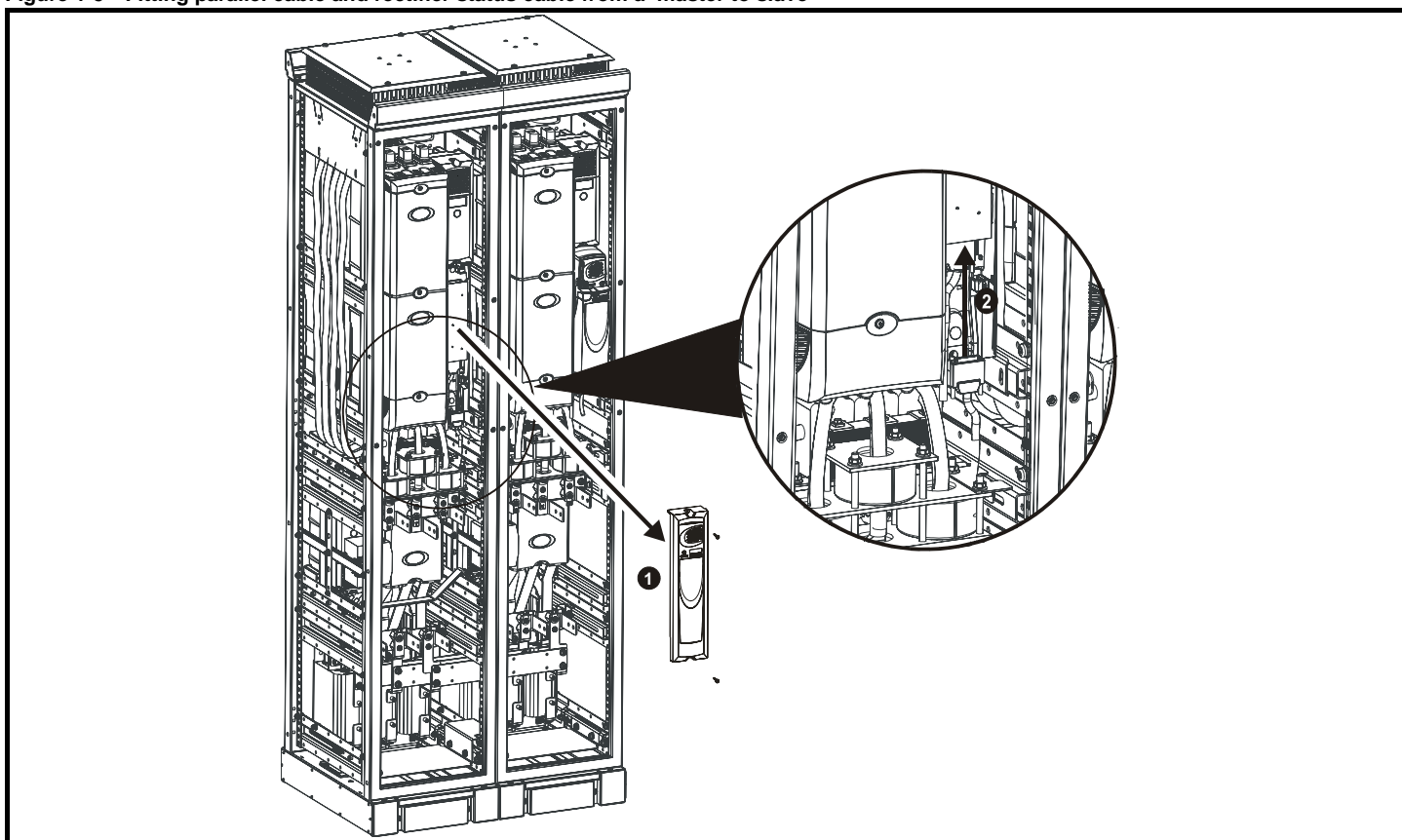
2. Fit the safety ground link: 6771-0029 (M10 nuts)

3. Fit the incomer EMC plate: 6771-0046 (M8 x 20 screws)

4. and 5. Fit the input parallel busbar: 6531-0222 (M8 x 20 screws); and M6 x 30 insulating spacer: 6262-0630 (M6 x 12 screws)

6. Fit the input parallel busbar: 6531-0222 (M8 x 20 screws)

**Figure 1-5 Fitting parallel cable and rectifier status cable from a master to slave**



1. Remove size 9 slave interface cover

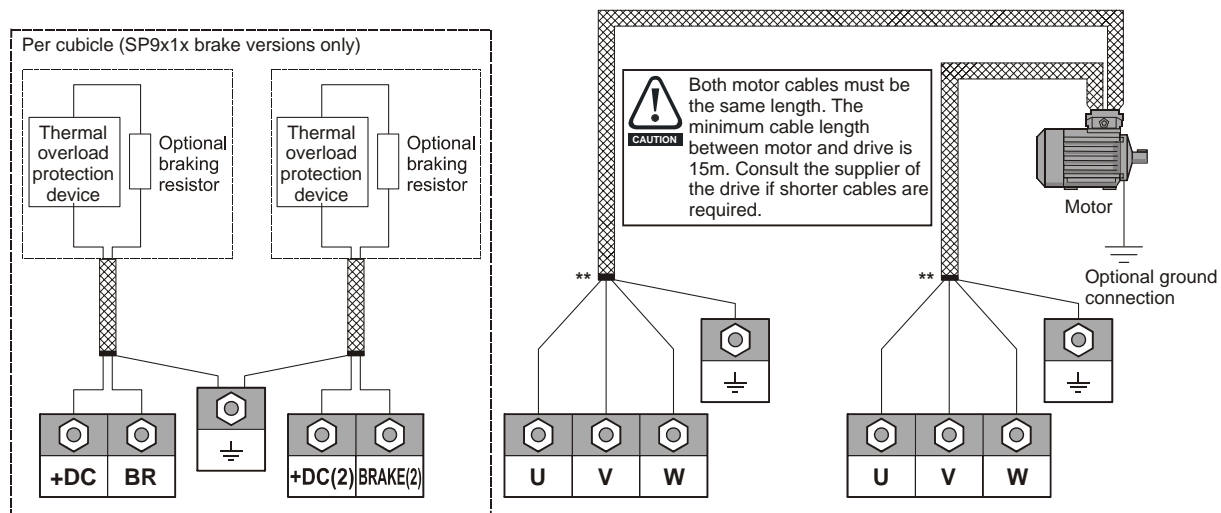
3. Replace size 9 slave interface cover

5. Replace all size 9 cubicle panels

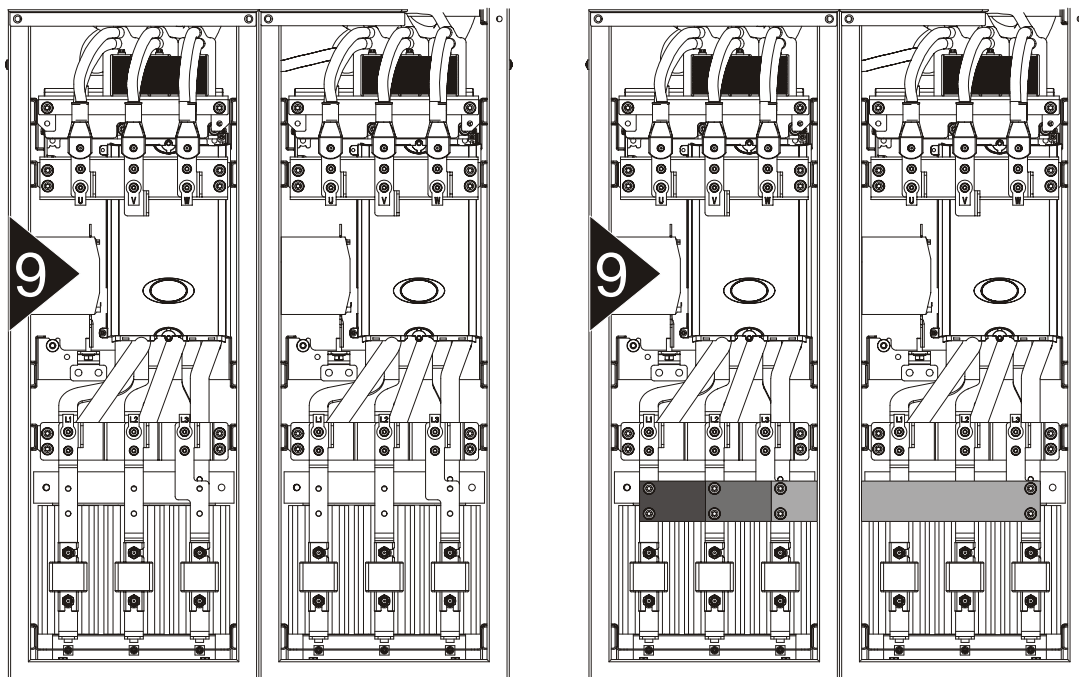
2. Connect the paralleling cable to the size 9 slave input slot

4. Ensure the rectifier status connectors are connected together. See Figure 1-2

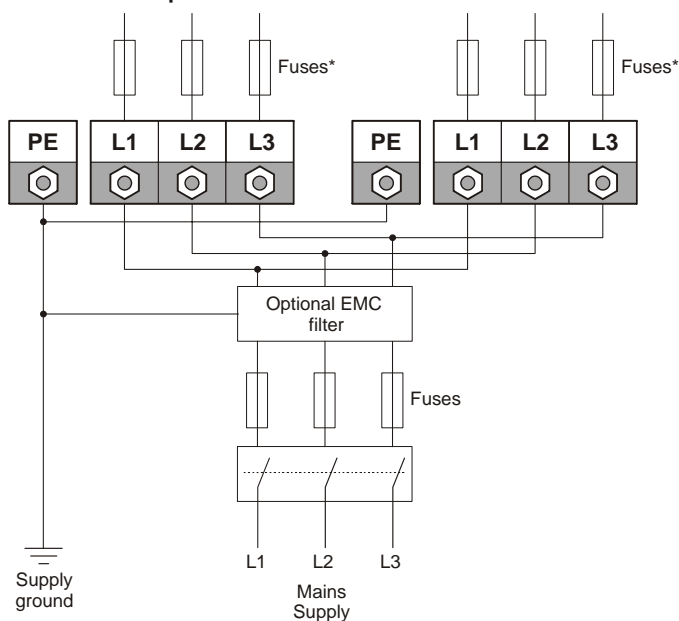
Figure 1-6 Unidrive SP size 9 free standing cubicle drive power connections



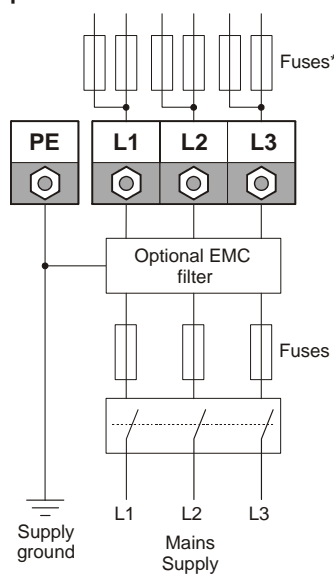
#### Output connections



#### Input connections without busbars



#### Input connections with busbars



\*Cubicles are supplied without internal fuses as standard, the user must fit them during installation. Fuses may be bought from Control Techniques.

\*\*Cable shield must be bonded to gland plate.